

Refugees and the city of Tilburg

-Netherlands, november 2016-

Tilburg:

- city in the south of Holland / near Belgian border
- 225.000 inhabitants (6th city)
- welcomes 536 refugees in 2016 as new citizens
- and 1000 people in temporary shelters + 100 minors

Ambition of the city administration:

“Supporting refugees in a way that they can and will participate in society and integrate...as soon as possible.”

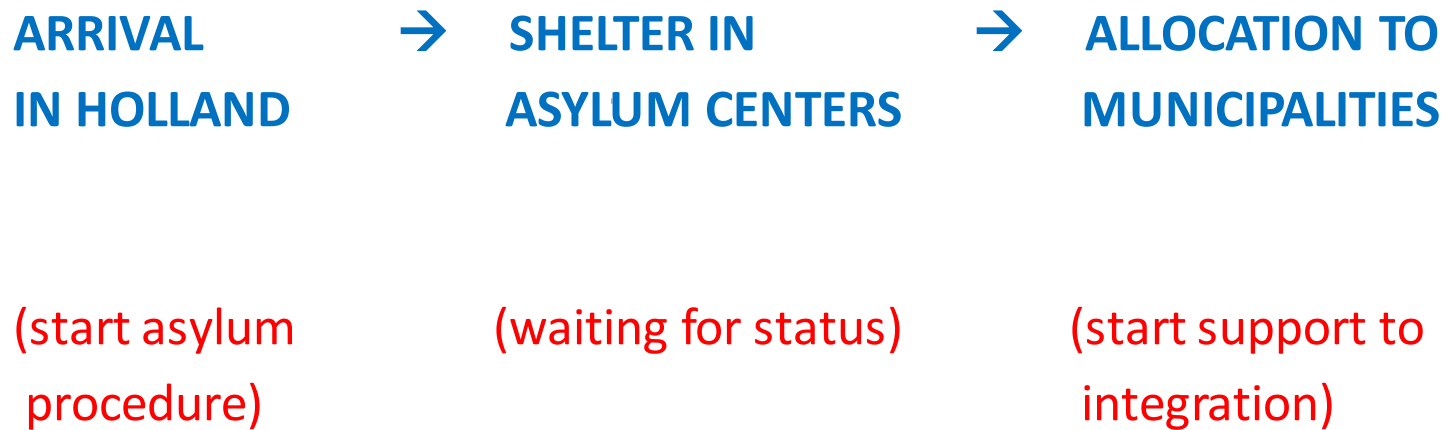
(in this context we developed a pilot / an experimental approach)

Pilot Jozefzorg:

=deal with COA (refugees in a temporary asylum center in Tilburg **STAY** in Tilburg)

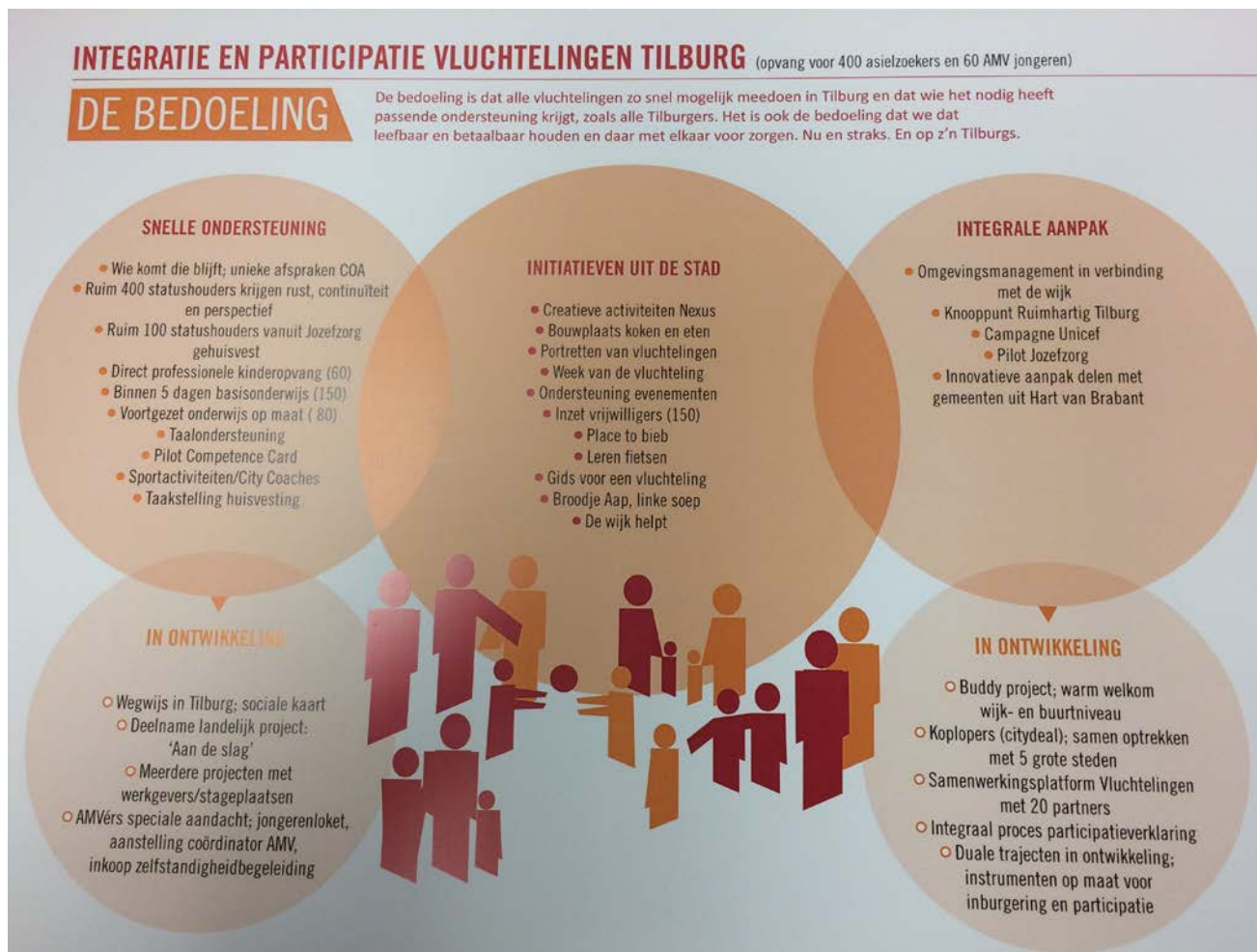
=so we can support refugees in a very early stage, to build up their future a.s.a.p.

=a number of organisations collaborate on these goals (Vluchtelingenwerk, Welzijnsorganisatie, Knooppunt Ruimhartig Tilburg and about 450 volunteers)



Tilburg starts support at the asylum center!!!

What do we do in the Pilot Jozefzorg?



What do we do in the Pilot Jozefzorg?

- we organise childcare
- primary education (within 5 days)
- custom made secondary education
- language teaching
- experiment Competence Card (diagnosis competences)

What do we do in the Pilot Jozefzorg? –continuation–

- we organise workshops to orientate on Dutch society (with COA)
- workshops and pathways to the labor market (with Vluchtelingenwerk)
- experiments for traineeships and job opportunities (with employers organisations)
- participate in an nationwide project (Aan de Slag) to intensivate volunteer work for refugees

What do we do in the Pilot Jozefzorg? –continuation–

- we organise sports activities (citytrainers)
- day care / handcrafts

.....and there are lots of activities initiated by NGO's and citizens (learning to bike, cooking together,and so on)

Why this (early and intensive) approach?

=>ambition of the city administration

- smooth integration is important for society (avoids isolation and contradictions)
- the approach is a big help for the refugee and his family (to come along)

=>report of Scientific Council for Government Policy (WRR)

- advices an early approach

=>large influx of refugees

- creates a sense of urgency

Statements:

“There is a lot of attention of giving shelter to refugees, that’s a good thing!”

“Attention and focus on participation and integration of the people in society is even as important!”

“Start support a.s.a.p. to work on those goals!”

What are the specific challenges for 2017?

- to be prepared for a variation of influx (+ family reunification)
- to continue an early approach
- to develop a team of specialized case workers for an even more custom approach
- to extend a toolbox with adequate and integrated pathways for language education and training skills

What are the specific challenges for 2017?

–continuation–

- to find sufficient opportunities on the labor market

- to connect the refugees with society on the scale of the city districts (after moving in)

- special attention for minors and young adults (youth unemployment free zone in Tilburg!)

Thanks for the attention!!